

# Seasons Greetings

YR 2008.

## Warrior of Light!

*Every Warrior of Light has felt afraid of going into battle  
Every Warrior of Light has, at some time in the past, lied or betrayed someone  
Every Warrior of Light has trodden a path that was not his  
Every Warrior of Light has suffered for the most trivial of reasons  
Every Warrior of Light has at least once, believed that he was not a warrior of light  
Every Warrior of Light has failed in his spiritual duties  
Every Warrior of Light has said 'yes' when he wanted to say 'no'  
Every Warrior of Light has hurt someone he loved  
That is why he is a warrior of light, because he has been through all this and yet has never lost hope of being better than he is*

**Excerpts from 'The Manual of the Warrior of Light' by Paulo Coelho**



Pradip Burman

When I read Paulo Coelho's "The Manual of the Warrior of Light" I was inspired to spread the message of this book which could serve to uplift the spirits of those who came in contact with this message.

I asked my artist friend, Mr. Gautam Partho Roy, whether he would do a series of paintings based on this book. He readily agreed and has done 12 paintings which are reproduced here.

I hope you will enjoy the paintings and the thoughts that have inspired these works.

With Best Wishes for the New Year

**Pradip Burman**

**Chairman Ayurvet Limited  
Ayurvet Research Foundation  
Sanat Products Ltd.**

First Class (B. Fin) in Arts from Rabindra Bharati University (Indian College of Arts), Kolkata in the year 1980.

It is a great pleasure and honor to be associated with the "Warrior of the Light", a symbolic representation of a struggler, who loves human beings and nature, written by internationally acclaimed author Paulo Coelho.

Warrior of Light is a character, who represents a Struggling Soldier and Missionary as well, in the battlefield-representing love, bravery, friendship, challenge, freedom, nature, beauty, trustworthiness, forgiveness, a great humanitarian, God fearing and at the same time a great listener and follower of great Saints.

### Exhibitions: ONE MAN SHOWS

Tagore (Airport) Art Gallery, Kolkata in 1980. World Trade Centre, Colaba, Mumbai in 1992. SALWAN's, DLF Qutab Plaza, New Delhi in 1996. SALWAN's, Connaught Circus, New Delhi in 1997.

**13 GROUP SHOWS:** Lalit Kala Academy, New Delhi in 1983, All India National Art Exhibition, Lalit Kala Academy, New Delhi in 1984 etc.

email- [artgautamproy@yahoo.co.in](mailto:artgautamproy@yahoo.co.in)



Gautam Partho Roy





A Warrior simply has to accept the Challenge





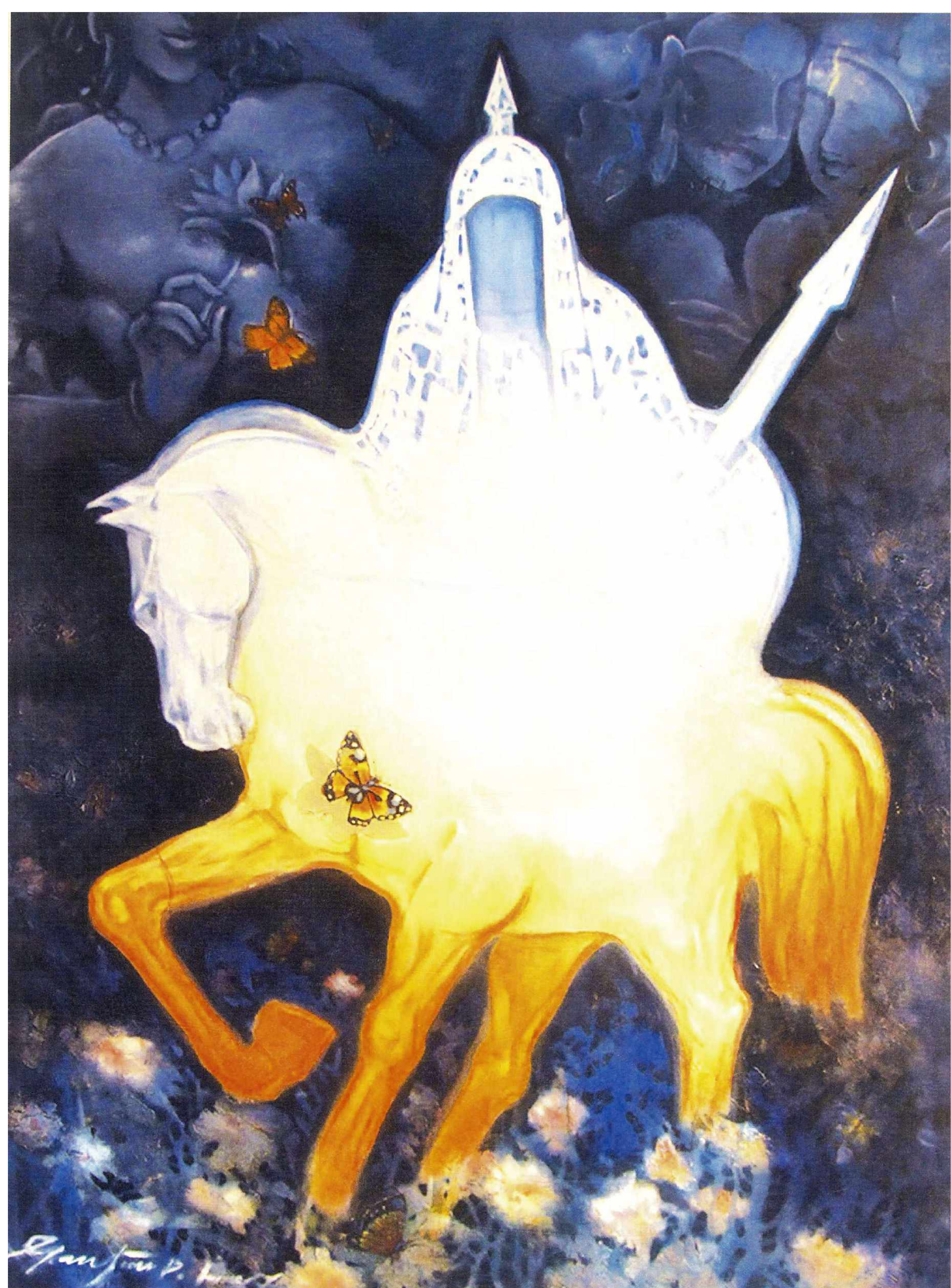
A Warrior know that an angel and a devil are both competing for his sword hand





In the intervals between battles, the warrior **rests**





A Warrior of light needs love





The Warrior of light has the qualities of a rock





The Warrior of light recognises the **silence** that precedes an **important battle**





The Warrior of light does not always have faith





The Warrior of light listens





The Warrior of light has learned that it is best to follow the light





All the world's roads lead to the heart of the warrior; he plunges unhesitatingly into the **river of passions** always flowing through his life





The way involves respect for all small and subtle things. Learn to recognise the right moment to adopt the necessary **attitudes**





The Warrior of light never falls into the trap of the word **freedom**