

GAIA

Our mother earth as a living Planet

It is important for us to know **OUR ORIGINS** as well as origins of our Planet and our Universe.

Who am I ? **WHERE DO WE COME FROM ?** What is the Milky Way ? How did it all start ?

These are questions Physicists, Biologists, Astrophysists and the Scientific Community ask and most agree that it started with a Big Bang 13.5 billion years ago when time and space were created. It is observed that there are clusters of stars known as Galaxies which are moving away from each other and no body knows where the Universe ends.

We live in the **MILKY WAY GALAXY** of which the Sun is just one of the many stars. Like the milky way, there are thousands of other galaxies in the Cosmos.

The journey of the universe is believed to be:

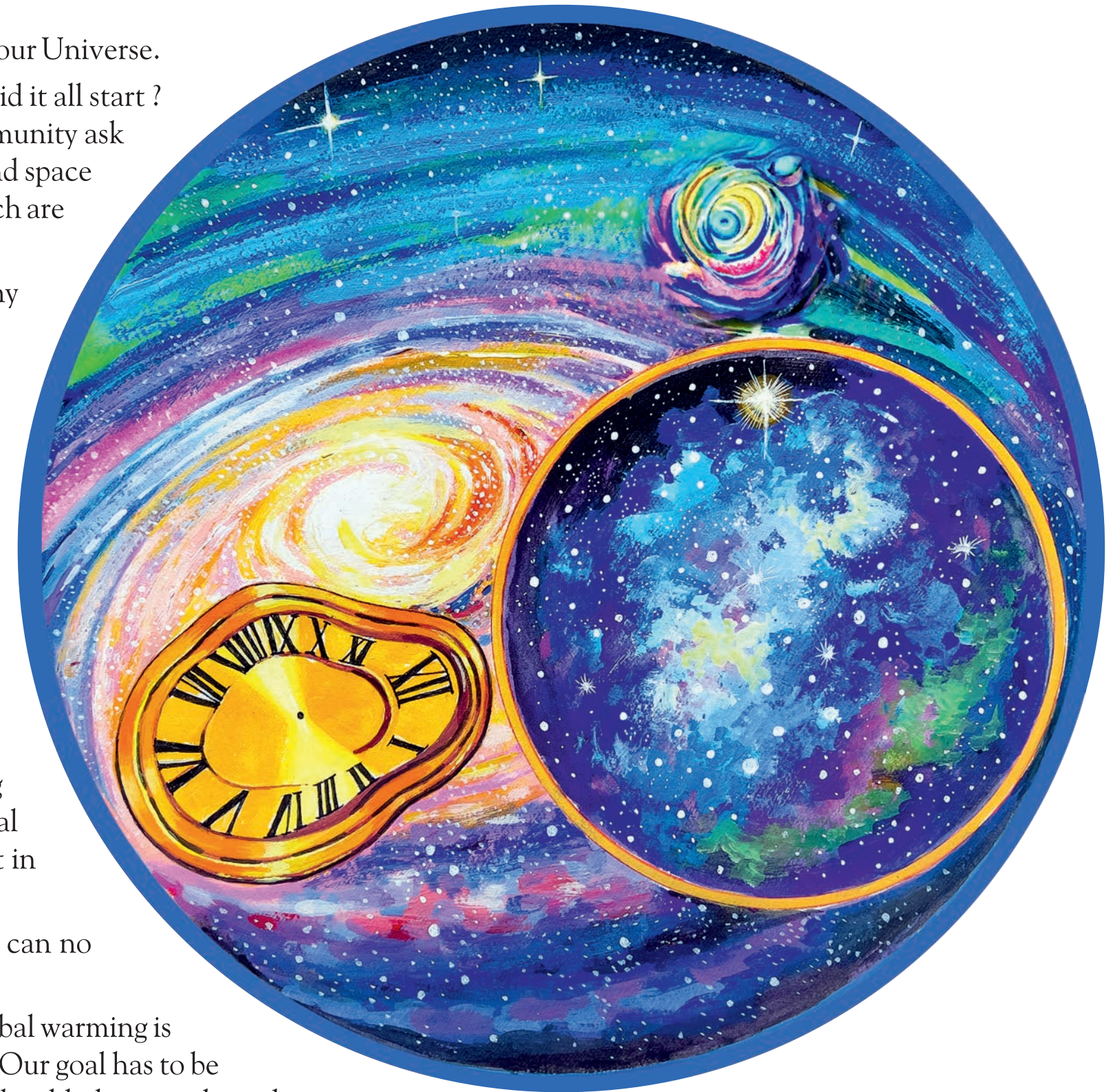
Years Ago

- 13.5 billion : Beginning of time and space -the big bang
- 4.5 billion : Formation of Planet Earth.
- 3.8 billion : Emergence of life.
- 500,000 : Neanderthals in Europe.
- 200,000 : Homo sapiens
- 13,000 : Homo sapiens only surviving Human Species
- 12,000 : Beginning of Civilisation.
- 200 : Industrial Revolution

Within the last 200 years, with the use of Fossil Fuels, Chemicals and increasing Pollution, nature has degraded and is unable to repair itself. If no remedial measures are taken, it is quite possible that the human race may become extinct in another 200 years.

The Population in 1800 was 1 billion and today it is 8 billion. The planet Earth can no longer sustain this population at the current rate of consumption.

While the reduction in population is a long haul, what can be done to prevent global warming is to **PHASE OUT USE OF FOSSIL FUELS** in the **SHORTEST** period of time. Our goal has to be to have our energy needs met entirely from **RENEWABLE SOURCES**. We should also recycle and reuse everything that we can.

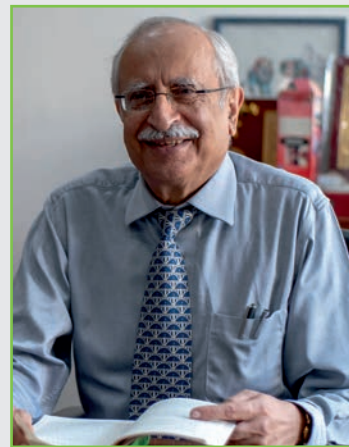


2024

GAIA

Our mother earth as a living Planet

Within the last 200 years, with the use of Fossil Fuels, Chemicals and increasing Pollution, nature has degraded and is unable to repair itself. If no remedial measures are taken, it is quite possible that the human race may become extinct in another 200 years.



Dear Friends,

All my previous Calendars have been about India and various aspects of our Culture, such as **Origins of Navratri, The Eternal Saree, and Headgears of India.**

This time I have taken a more important topic which has to do with our future and our environment. It starts off with COSMOS, the creation, a Big Bang 13.5 billion years ago, with the formation of earth 4.5 billion years ago, beginning of life 3.8 billion years ago, the emergence of Homo-Sapiens about 2.5 million years ago, and the beginning of our civilization 10,000 years ago.

Within the last 50 years we have experienced the effects of Climate change which is **entirely the result of human activity.**

The Indian population at the time of Independence was 35 Crore, today it is 4 times as much, 140 Crores. The land has not increased but the resources are wearing thin with ever-rising consumption. The effect on our lives with increasing consumption is depicted in the Calendar by looking at various aspects such as Agriculture, Pollution, Forest Cover, Bio-diversity, Climate Change amongst others, in today's context.

Solutions are three: I) Reduce our carbon footprint by phasing out fossil fuels to 50% of its current value in next 5 years. II) Recycle all waste. III) Increase our share of renewable energy from 30% to 100% in next 10 years.

We need to do this in the next five years and have to start **"NOW"** - for the survival of our grandchildren.

Pradip Burman

Recommended: Documentary: Beyond Boundaries-available on NETFLIX.

ABOUT THE ARTIST

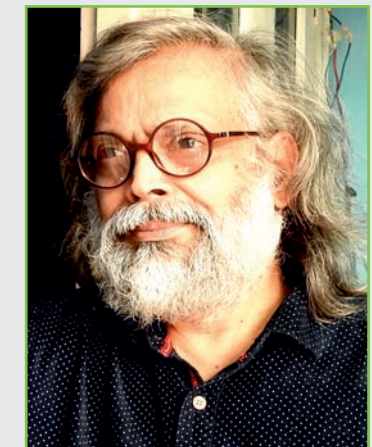
"The theme of nature in art has almost always been present. Nature can be a simple add on to a painting to convey a sense of depth or perspective. However, it can also be the main focus of a work of art. Just like nature can be recreated through art, it can also be used as a stand in for greater thought.

A realistic depiction of a mountain or an abstract depicting the future can symbolize not only the sublime, but also curiosity for the unknown. We are living in a time when our culture is becoming more socially responsible and active. Creative fields, including fashion, architecture and visual arts are leading the way in conversations around sustainability, the environment and social consciousness. In art, sustainability has led to the development of pioneering works that use innovative ways to convey powerful messages about climate change and social injustice.

"In other words, art speaks for what nature cannot and I have made an effort to do it as loudly as I can with this calendar." - **Gautam Partho Roy, Artist**

Gautam Partho Roy holds a Bachelor of Fine Arts degree from Rabindra Bharati University, Kolkata and is the only artist for our calendars since we started making calendars.

Contact : +91-93508 58538. E-mail: gautampartharoy@gmail.com



Gautam Partho Roy

2024

GAIA

Our mother earth as a living Planet



Agriculture



Biodiversity



Climate



Education



Energy



Ecosystem



Forest



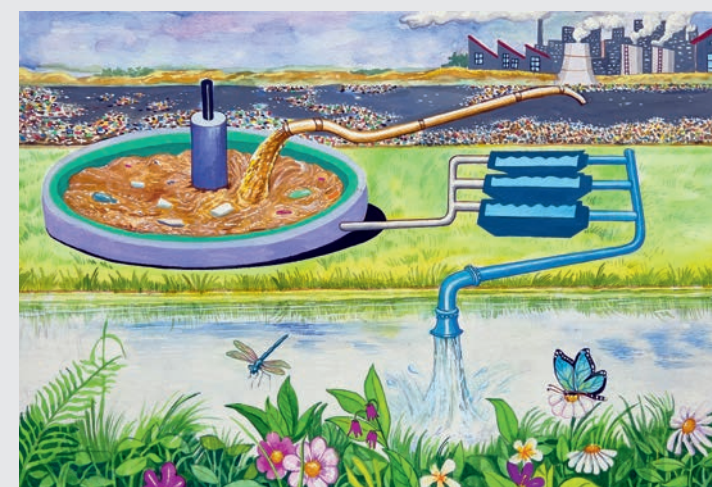
Pollution



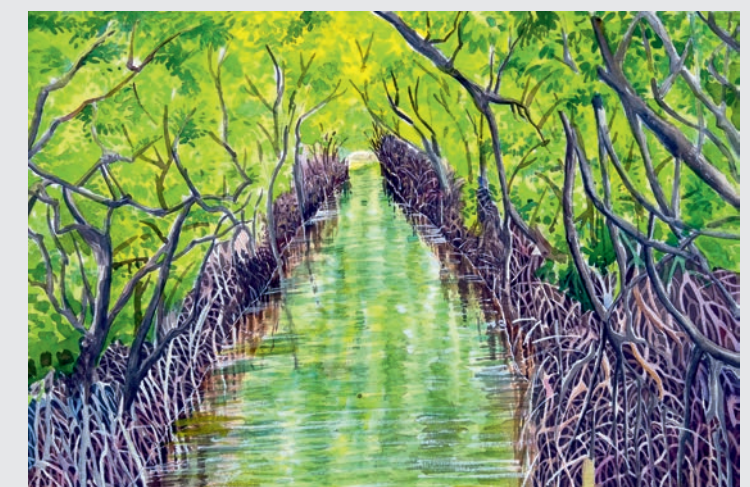
Population



Recycling



Water



Wet Lands and Mangroves

2024

Agriculture

Sustainability Is the Key

Agriculture is crucial for providing food, livelihoods and economic stability. With the overuse of chemical fertilisers, the soil is being degraded. Bio compost (organic) would restore the soil to its original state.



	SUN	MON	TUE	WED	THU	FRI	SAT	SUN	MON	TUE	WED	THU	FRI	SAT	SUN	MON	TUE	WED	THU	FRI	SAT
2024 JANUARY		1 New Year	2	3	4	5	6	7	8	9	10	11	12	13 Lohri	14	15	16	17	18	19	20
	21	22	23	24	25	26 Republic Day	27	28	29	30	31										

Biodiversity

Essential to Maintain Stability

Biodiversity refers to the variety and variability of living organisms on Earth, including plants, animals and microorganisms. It is **crucial** for ecosystem stability, resilience and the well-being of all life forms.



2024		SUN	MON	TUE	WED	THU	FRI	SAT	SUN	MON	TUE	WED	THU	FRI	SAT	SUN	MON	TUE	WED	THU	FRI	SAT
FEBRUARY						1	2	3	4	5	6	7	8	9	10	11	12	13	14	15	16	17
		18	19	20	21	22	23	24	25	26	27	28	29									

Basant Panchami

Climate

Reducing Emissions Is the
Need of The Hour

Climate change is
causing global
warming, forest fires,
floods and extreme
weather events.



2024
MARCH

SUN	MON	TUE	WED	THU	FRI	SAT	SUN	MON	TUE	WED	THU	FRI	SAT	SUN	MON	TUE	WED	THU	FRI	SAT
					1	2	3	4	5	6	7	8	9	10	11	12	13	14	15	16
17	18	19	20 Equinox	21	22	23	24	25 Holi	26	27	28	29 Maha Shivaratri	30 Ram Navami	31						

Education

Environment Education
for Tomorrow

Education will make students aware of the reasons for destruction of the planet. They will become leaders for action to sustain the Earth.



2024
APRIL

SUN	MON	TUE	WED	THU	FRI	SAT	SUN	MON	TUE	WED	THU	FRI	SAT	SUN	MON	TUE	WED	THU	FRI	SAT
	1	2	3	4	5	6	7	8	9	10	11	12	13	14	15	16	17	18	19	20
21	22	23	24	25	26	27	28	29	30											

Eid Ul Fitr

Baishaki

Dr Ambedkar
Jayanati

Ram Navami

Energy

Let's Phase Out Fossil Fuels

The major cause of CO₂ emission comes from use of fossil fuels for producing energy. To restore normalcy, 100% use of **renewable** energy is needed and is possible.



2024
MAY

SUN	MON	TUE	WED	THU	FRI	SAT	SUN	MON	TUE	WED	THU	FRI	SAT	SUN	MON	TUE	WED	THU	FRI	SAT
			1 May Day	2	3	4	5	6	7	8	9	10	11	12	13	14	15	16	17	18
19	20	21	22 Buddha Purnima	23	24	25	26	27	28	29	30	31								

Ecosystem

Nature's Way of Recycling

Ecology is the study of how organisms interact with their surroundings to restore stability.



2024
JUNE

SUN	MON	TUE	WED	THU	FRI	SAT	SUN	MON	TUE	WED	THU	FRI	SAT	SUN	MON	TUE	WED	THU	FRI	SAT
						1	2	3	4	5	6	7	8	9	10	11	12	13	14	15
16 MuhEid-ul-Juha	17	18	19	20	21	22	23	24	25	26	27	28	29	30						

Summer Solstice

Forest

The Lungs of the Nature

Forests are crucial for carbon sequestration, climate regulation, providing oxygen, soil preservation and also provide habitats for countless species.



2024
JULY

SUN	MON	TUE	WED	THU	FRI	SAT	SUN	MON	TUE	WED	THU	FRI	SAT	SUN	MON	TUE	WED	THU	FRI	SAT
	1	2	3	4	5	6	7	8	9	10	11	12	13	14	15	16	17	18	19	20
21	22	23	24	25	26	27	28	29	30	31										
Guru Purnima																	Muharram			

Pollution

Stop Polluting the Air and Water

Air, water and ocean pollution are destroying human health. Phasing out fossil fuels and recycling plastics will reduce Pollution.



2024
AUGUST

SUN	MON	TUE	WED	THU	FRI	SAT	SUN	MON	TUE	WED	THU	FRI	SAT	SUN	MON	TUE	WED	THU	FRI	SAT
				1	2	3	4	5	6	7	8	9	10	11	12	13	14	15	16	17
18	19	20	21	22	23	24	25	26	27	28	29	30	31							

Raksha Bandhan

Independence Day



Population

Stabilise Population for Our Survival

1900- 1.6 Billion

2000 – 6.1 Billion

2023- 8.0 Billion

In the last hundred
twenty-three years the
population has gone
up 5 times without
increasing total area-
available. This has put a
strain on our resources.



2024
SEPTEMBER

SUN	MON	TUE	WED	THU	FRI	SAT	SUN	MON	TUE	WED	THU	FRI	SAT	SUN	MON	TUE	WED	THU	FRI	SAT
1	2	3	4	5	6	7	8	9	10	11	12	13	14	15	16	17	18	19	20	21
22	23	24	25	26	27	28	29	30												
Autumn Equinox				Janamastmi										Eid-e-Milad						

Ganesh Chaturthi

Eid-e-Milad

Recycling

Reduce, Reuse, Recycle

Water cycle, oxygen cycle, nitrogen cycle and carbon cycle in nature has helped us survive the last ten thousand years. We must recycle everything.

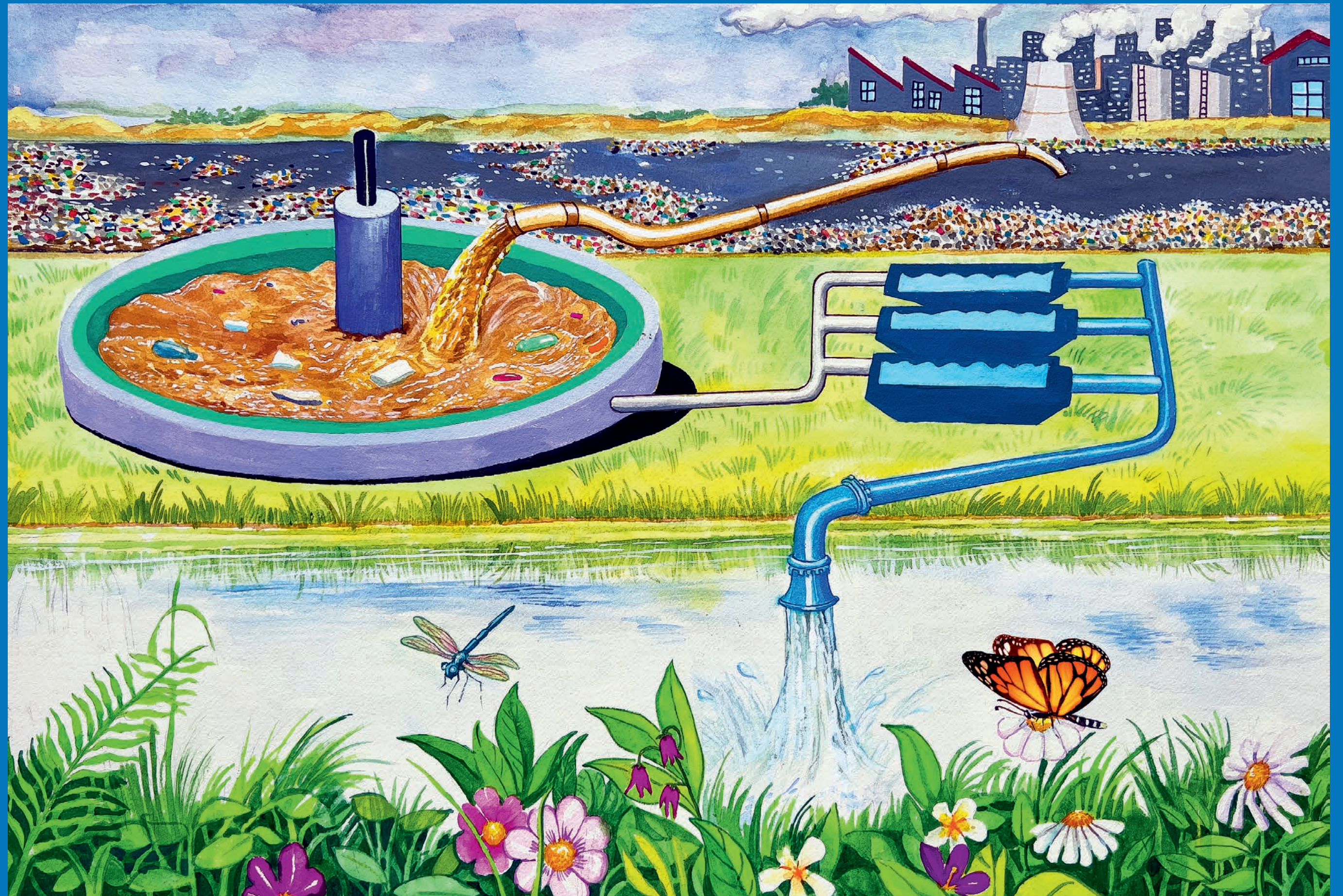


		SUN	MON	TUE	WED	THU	FRI	SAT	SUN	MON	TUE	WED	THU	FRI	SAT	SUN	MON	TUE	WED	THU	FRI	SAT
2024 OCTOBER				1	2 Gandhi Jayanti	3	4	5	6	7	8	9	10	11	12 Dussehra	13	14	15	16	17 Valmiki Jayanti	18	19
		20 Karva Chauth	21	22	23	24	25	26	27	28	29	30	31									

Water

Every Drop Matters

Water is a precious resource essential for life. Water harvesting will restore ground water. Don't waste water.



		SUN	MON	TUE	WED	THU	FRI	SAT	SUN	MON	TUE	WED	THU	FRI	SAT	SUN	MON	TUE	WED	THU	FRI	SAT
							1	2	3	4	5	6	7	8	9	10	11	12	13	14	15	16
							Diwali	Goverdhan	Puja	Bhai Duj											Guru Nanak B'day	
		17	18	19	20	21	22	23	24	25	26	27	28	29	30							

2024
NOVEMBER

Wetlands

Preserve the kidneys of nature

Wetlands improve water quality and maintain ecosystem productivity. Mangroves buffer coastlines reducing coastal erosion and provide breeding grounds for coastal aquatic species. They also regulate nutrient and water cycle and silt deposit.



2024
DECEMBER

SUN	MON	TUE	WED	THU	FRI	SAT	SUN	MON	TUE	WED	THU	FRI	SAT	SUN	MON	TUE	WED	THU	FRI	SAT
1	2	3	4	5	6	7	8	9	10	11	12	13	14	15	16	17	18	19	20	21
22	23	24	25 Christmas	26	27	28	29	30	31											

Winter Solstice

2025



January

S	M	T	W	Th	F	S
			1	2	3	4
5	6	7	8	9	10	11
12	13	14	15	16	17	18
19	20	21	22	23	24	25
26	27	28	29	30	31	

February

S	M	T	W	Th	F	S
						1
2	3	4	5	6	7	8
9	10	11	12	13	14	15
16	17	18	19	20	21	22
23	24	25	26	27	28	

March

S	M	T	W	Th	F	S
						1
2	3	4	5	6	7	8
9	10	11	12	13	14	15
16	17	18	19	20	21	22
23	24	25	26	27	28	29
30	31					

April

S	M	T	W	Th	F	S
		1	2	3	4	5
6	7	8	9	10	11	12
13	14	15	16	17	18	19
20	21	22	23	24	25	26
27	28	29	30			

May

S	M	T	W	Th	F	S
				1	2	3
4	5	6	7	8	9	10
11	12	13	14	15	16	17
18	19	20	21	22	23	24
25	26	27	28	29	30	31

June

S	M	T	W	Th	F	S
1	2	3	4	5	6	7
8	9	10	11	12	13	14
15	16	17	18	19	20	21
22	23	24	25	26	27	28
29	30					

July

S	M	T	W	Th	F	S
		1	2	3	4	5
6	7	8	9	10	11	12
13	14	15	16	17	18	19
20	21	22	23	24	25	26
27	28	29	30	31		

August

S	M	T	W	Th	F	S
					1	2
3	4	5	6	7	8	9
10	11	12	13	14	15	16
17	18	19	20	21	22	23
24	25	26	27	28	29	30
31						

September

S	M	T	W	Th	F	S
	1	2	3	4	5	6
7	8	9	10	11	12	13
14	15	16	17	18	19	20
21	22	23	24	25	26	27
28	29	30				

October

S	M	T	W	Th	F	S
			1	2	3	4
5	6	7	8	9	10	11
12	13	14	15	16	17	18
19	20	21	22	23	24	25
26	27	28	29	30	31	

November

S	M	T	W	Th	F	S
						1
2	3	4	5	6	7	8
9	10	11	12	13	14	15
16	17	18	19	20	21	22
23	24	25	26	27	28	29
30						

December

S	M	T	W	Th	F	S
	1	2	3	4	5	6
7	8	9	10	11	12	13
14	15	16	17	18	19	20
21	22	23	24	25	26	27
28	29	30	31			